

Monitoring, optimal control, diagnostics, & prognostics of critical and remotely located water processing systems is required for effective planning, management, and operations of such critical assets. GTC's tools can be customized to any water processing system to automate these processes for significant benefit to all involved stakeholders.

What Our ISHM Tools Can Do for Your Water Processing Systems?

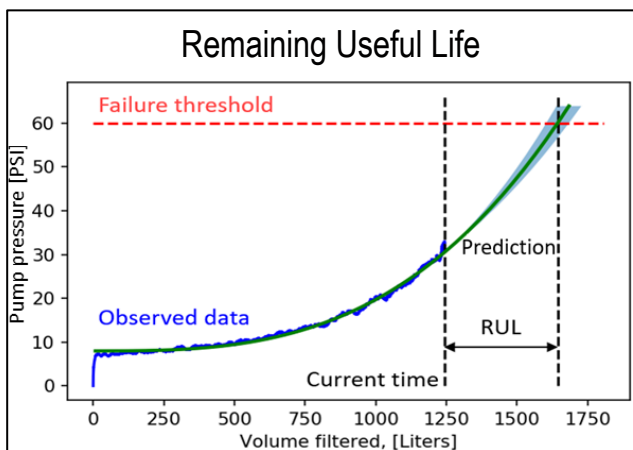
- System Modeling & Simulation
- Status & Health Monitoring
- Component & System Diagnostics
- Prognostics & Health Management
- Advanced/Optimal System Control

Capabilities:

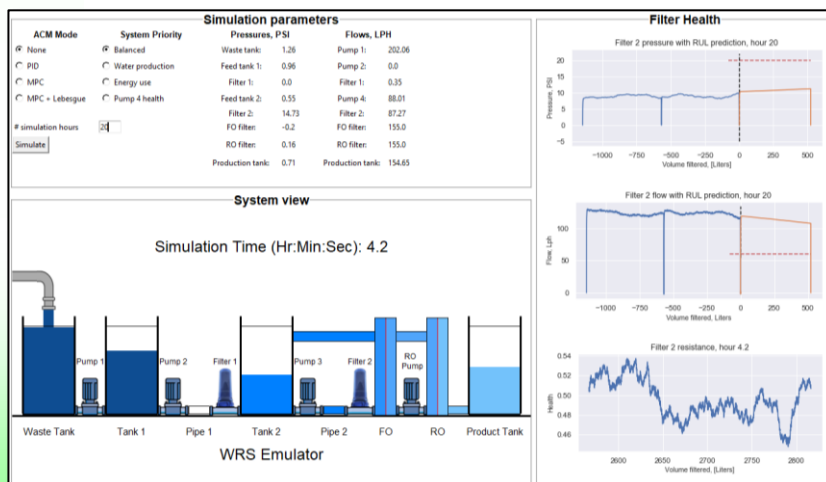
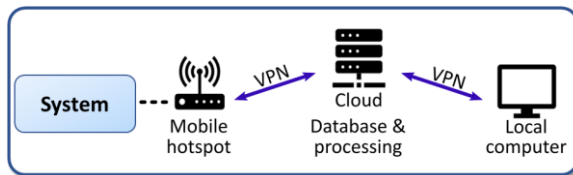
- "What-if" Analysis
- System Health Visualization
- Early Fault Diagnosis
- Predictive Maintenance
- Remaining Useful Life Prediction
- Multi-Objective Optimization

Benefits:

- Reliable & Predictable Operations
- Increased Operational Uptime
- Reduced Unplanned Maintenance
- Reduces Operator Engagement
- Efficient Resource Management



Remote Monitoring



CONTACT US

Global Technology Connection, Inc.
www.globaltechinc.com

Address: 2839 Paces Ferry Rd,
Overlook II, Suite 1160
Atlanta, GA 30339

Telephone : +1 770 803 3001

24 Hour line : +1 404 771 2600

Toll Free : +1 800 215 4468

Fax : +1 770 234 4148

E-mail : admin@globaltechinc.com